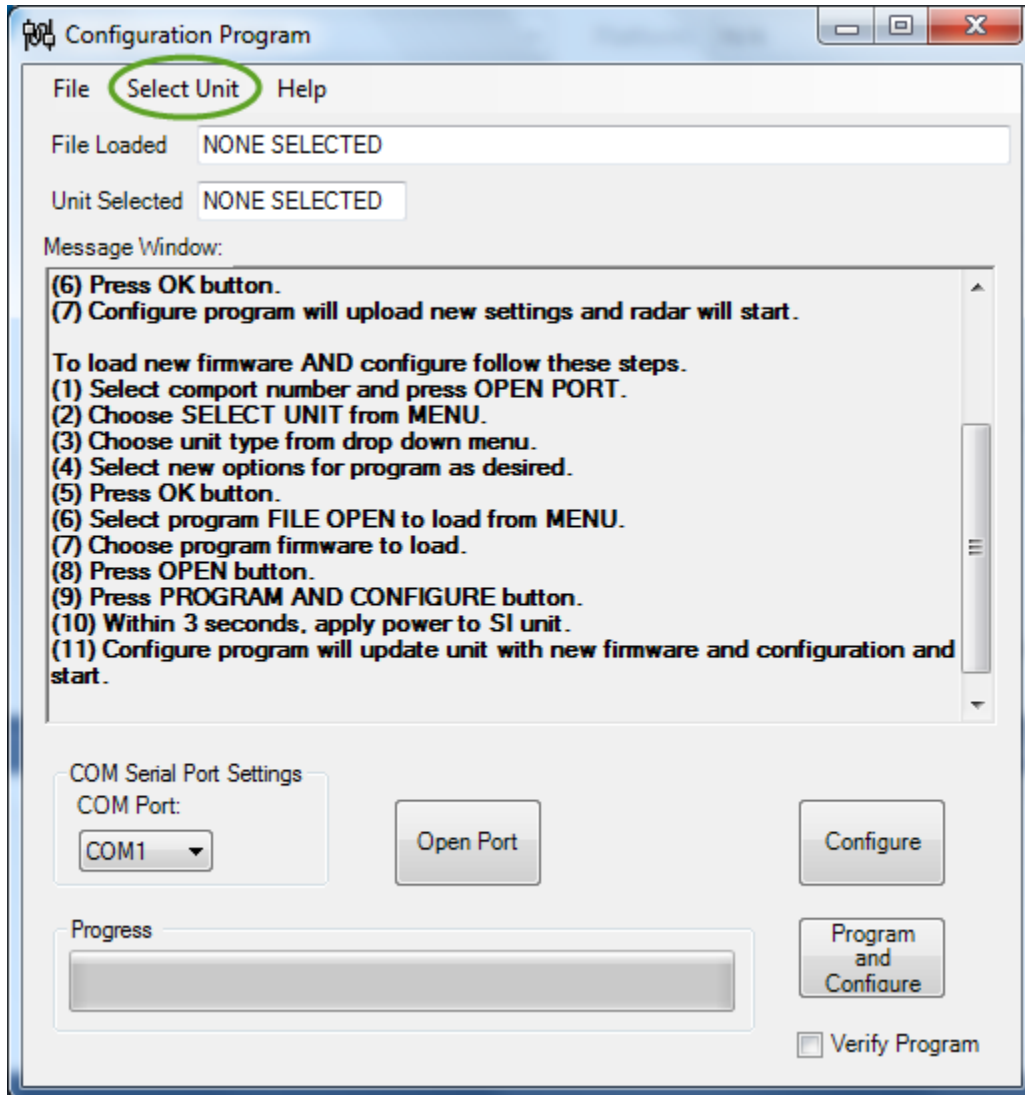


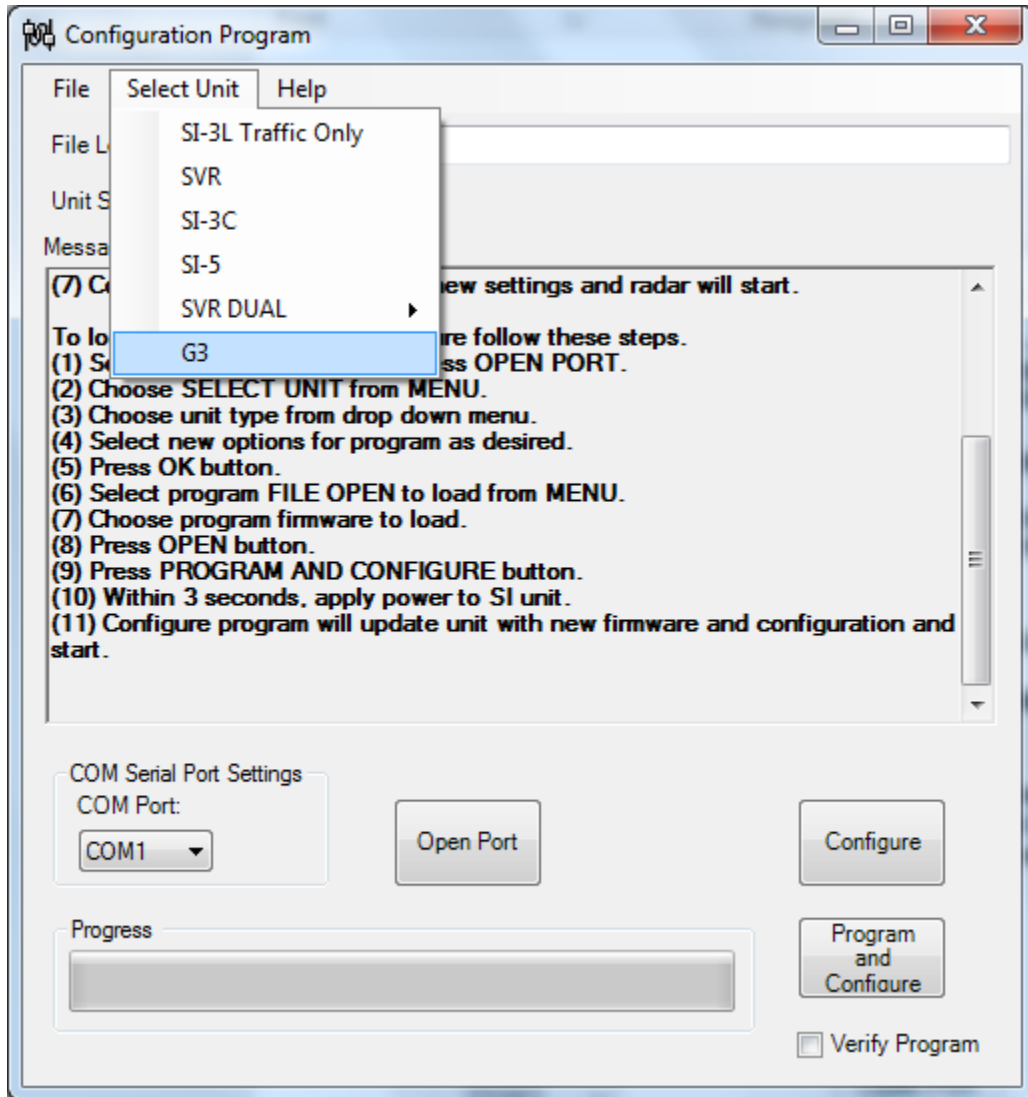
Programming and configuring the G3

To program a G3 with new firmware:

- (1) Run the Configure program. This dialog box will display:



- (2) Click the “select unit” button at the top of the configuration box and choose “G3” under the pull down menu.



(3) The following window will display:

G3 Configuration Items

FILE Serial Number Version Unit ID

G3 - 00000 0.0 7

Units MPH KPH Australia Version

MAX Patrol Speed 100 Max speed for this unit is: 100

MIN Patrol Speed 5 Min speed for this unit is: 5

MAX Target Speed Sta/Mov 210 Max speed for this unit is: 210

MIN Target Speed Sta/Mov 12 Min speed for this unit is: 12

Same Direction Separation 5 Min speed separation: 5

Minimum Volume level Volume range 1 - 8 1 Keypad Beep ON OFF

Sensitivity 5 1 to 5 max

Directional Mode ON

Operational Mode Stationary Moving Opposite Moving Same Stopwatch

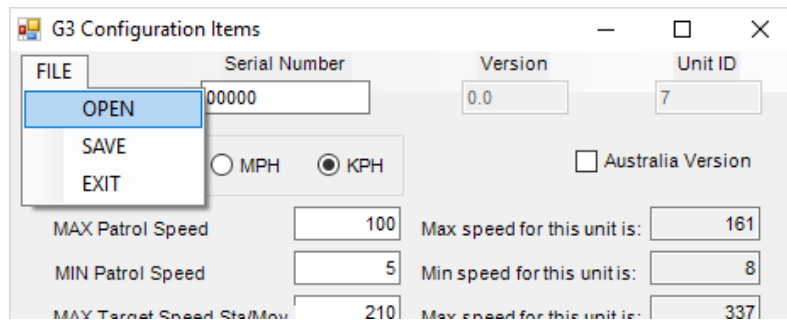
Fast Mode Fast Simultaneous Disabled

Lock Options Patrol Lock Enable

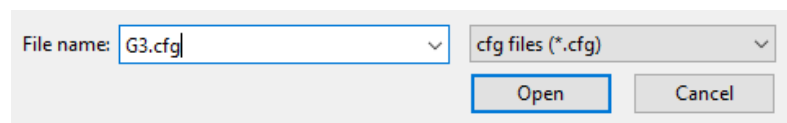
Baud Rate 1200 2400 4800 9600 19200 38400 57600 115200

Serial Protocol TTTPPP<cr>

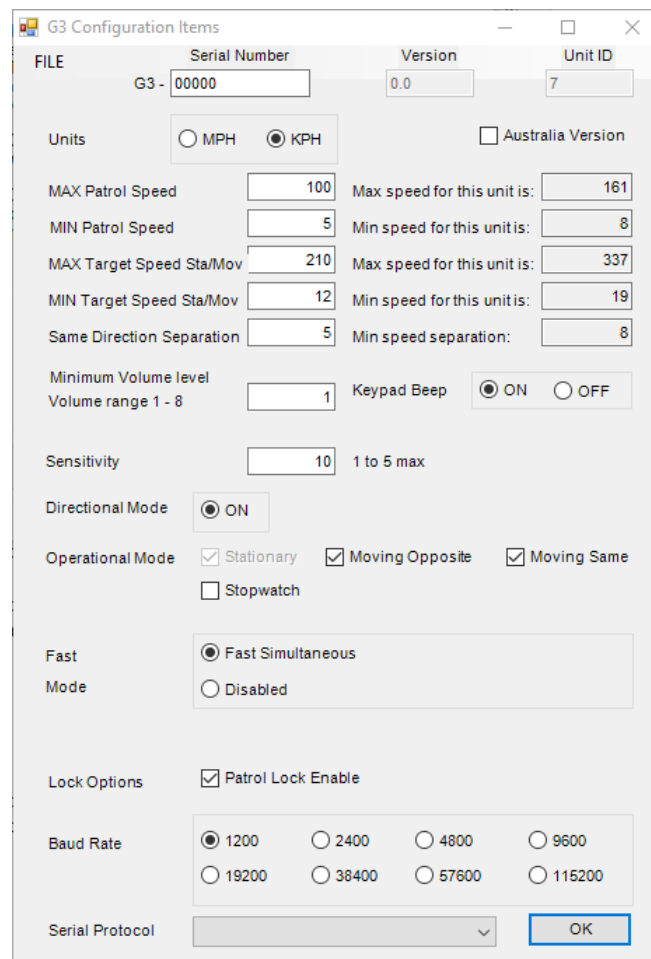
(4) If you are loading a saved G3 configuration, click on the “OPEN” selection under “FILE”.



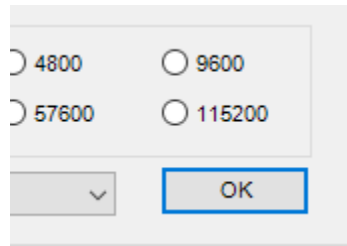
(5) Select a G3 config file and click open.



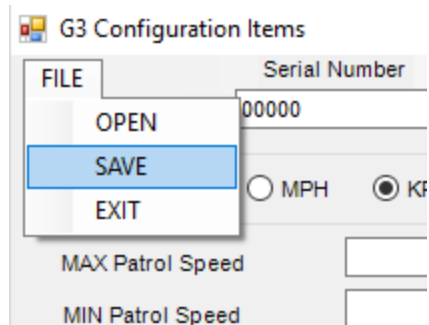
(6) If you are not loading a predefined configure file, select the G3 options manually as desired.



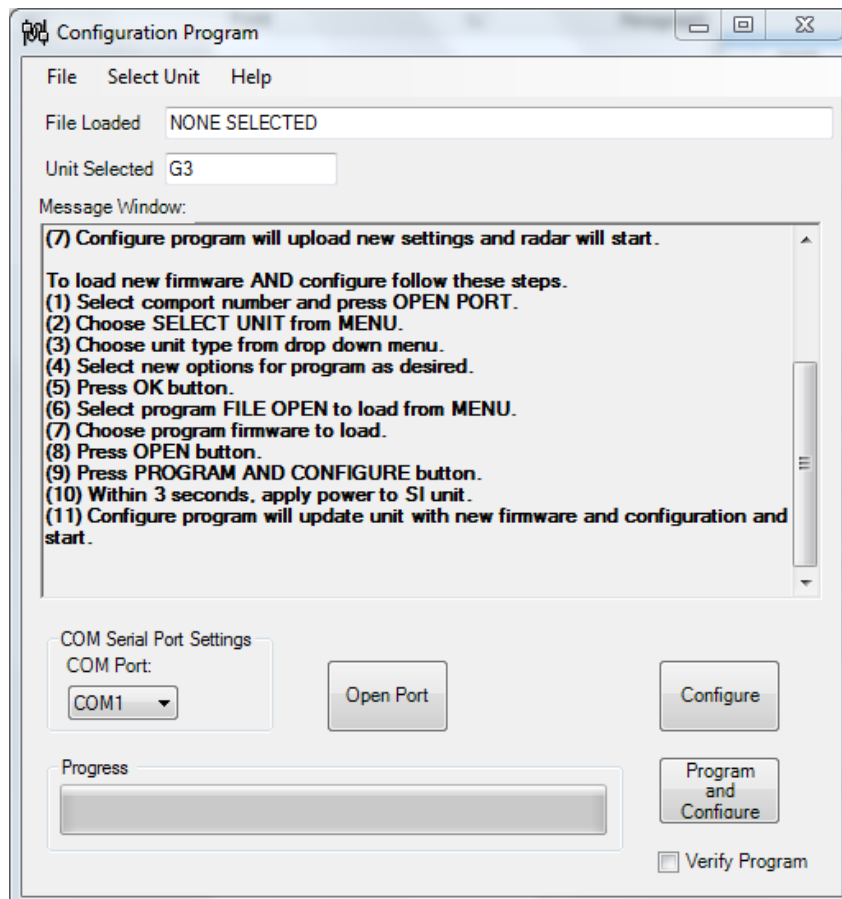
(7) Once all selections have been made, click "OK"



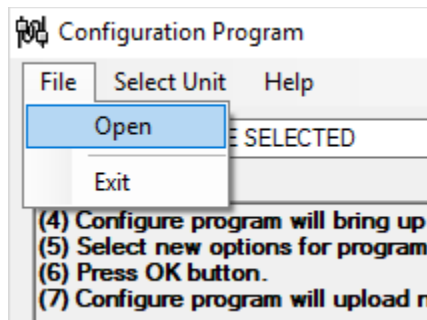
(8) Or if you prefer, click on the "FILE" then "SAVE" to save these settings to a config file for later loading.



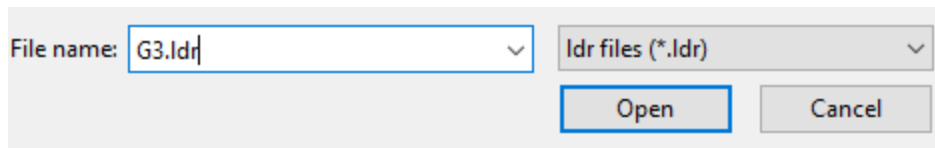
(9) After pressing "OK" the G3 configuration screen closes and the main programming screen will show. Please verify that the "Unit Selected" box shows "G3"



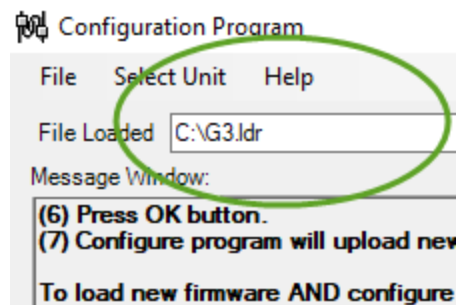
(10) Click on "FILE" then "OPEN"



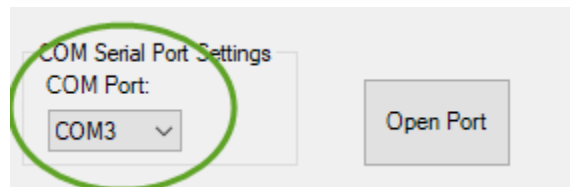
(11) Select the firmware file to load. (Note: this file will end in .ldr) and click open.



(12) Make sure that the file path has been correctly filled in.

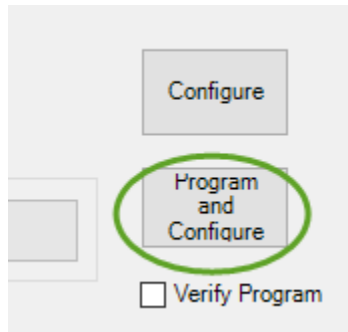


(13) Make sure that the COM port settings match the correct port on the computer. Click the "Open Port" button.

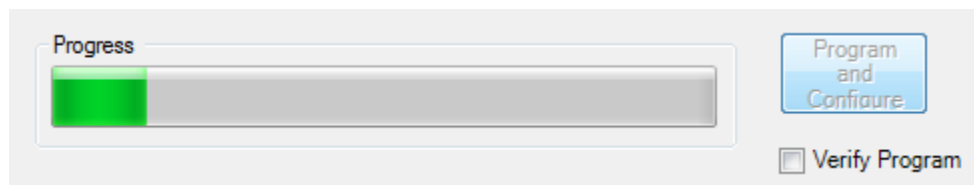


The port should open and be ready for programming, if not, check your hardware and software driver installation on the programming computer.

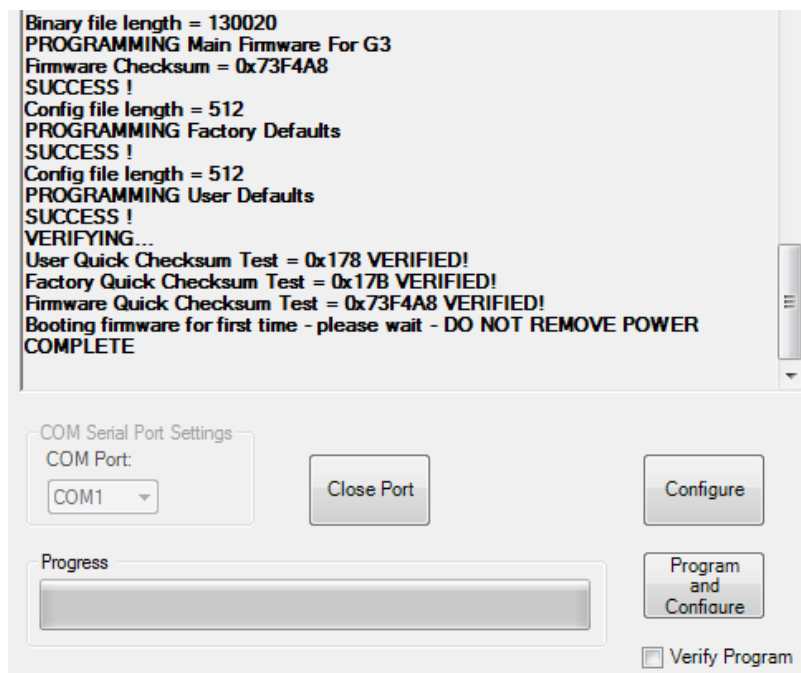
(14) Click on the Program and Configure button on the lower right corner. Immediately (within 5 seconds) press the power button on the G3 (either the front power button or the power button on the IR remote)



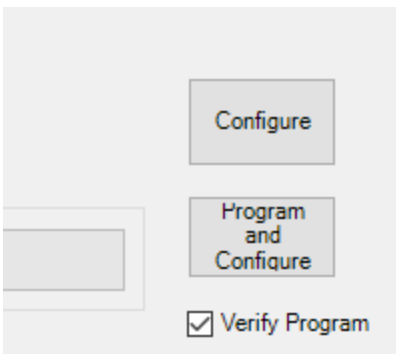
(15) The configure program will now load firmware into the G3. You should see the progress bar move as code is loaded.



(16) While programming, the display window will show the progress of the code loading. Do not remove power during the loading operation!



Verifying software after loading:



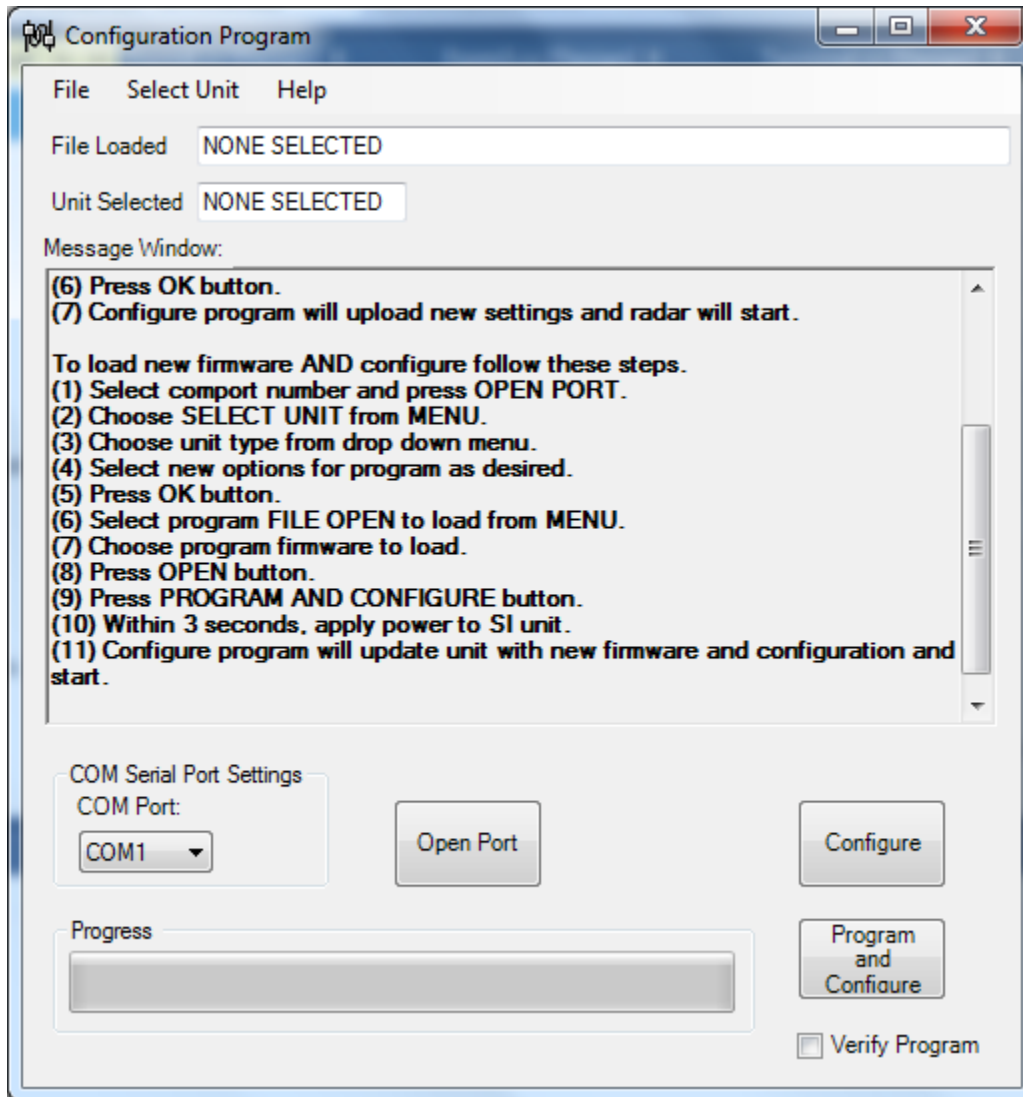
To verify that the flash memory chip on the G3 has programmed correctly, you can check the “Verify” box on the main program window. After loading new firmware into the G3, the configure program will test and verify the contents of the flash memory chip to confirm that the code loaded into the G3 matched the firmware that was loaded in.

Note: Checking the Verify program box will significantly slow down the programming operation as the flash chip is tested and the loaded firmware is read back and compared to the original file. This box should only be checked if the user wants 100 % verification that the memory flash chip is healthy.

To configure a G3:

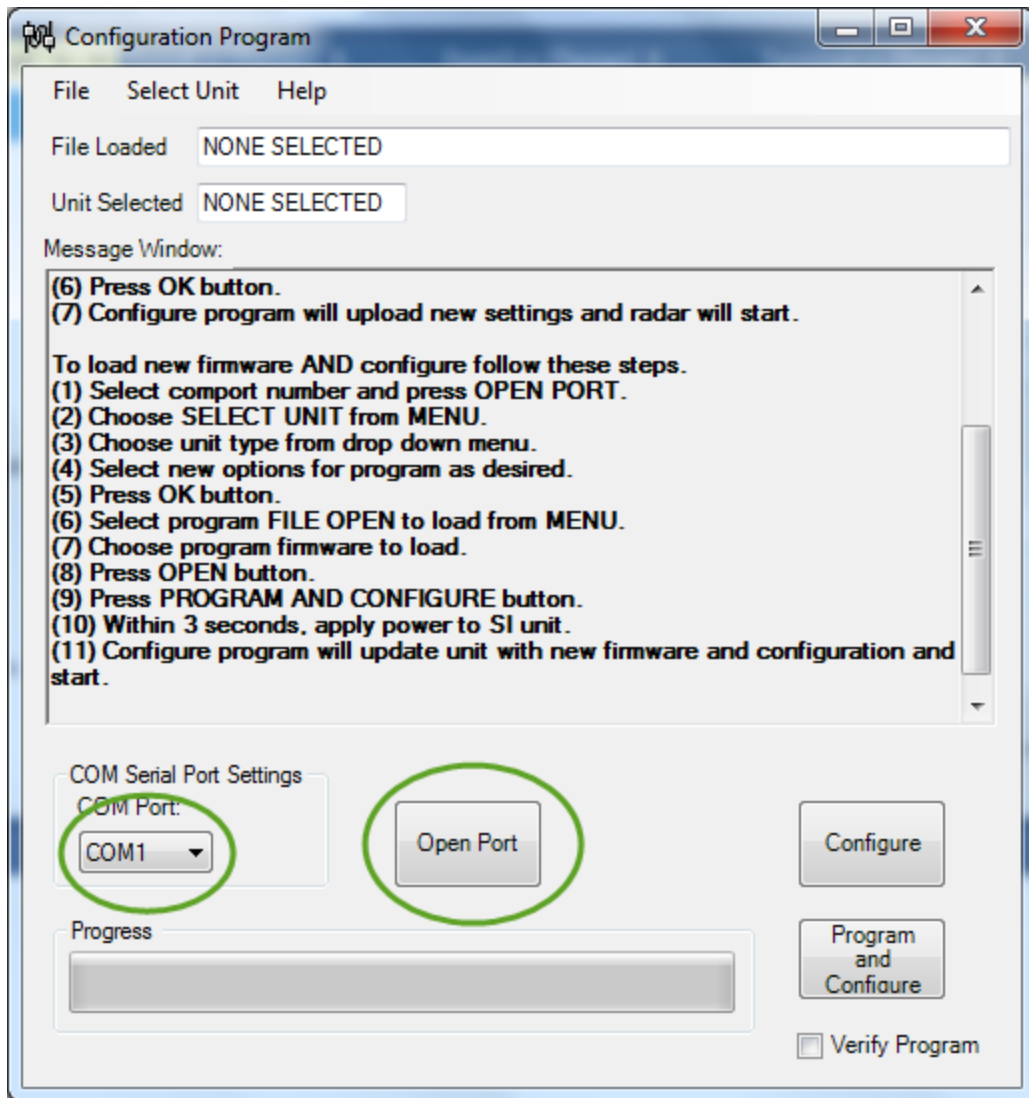
- (1) Run the Configure program.

This dialog box will show:

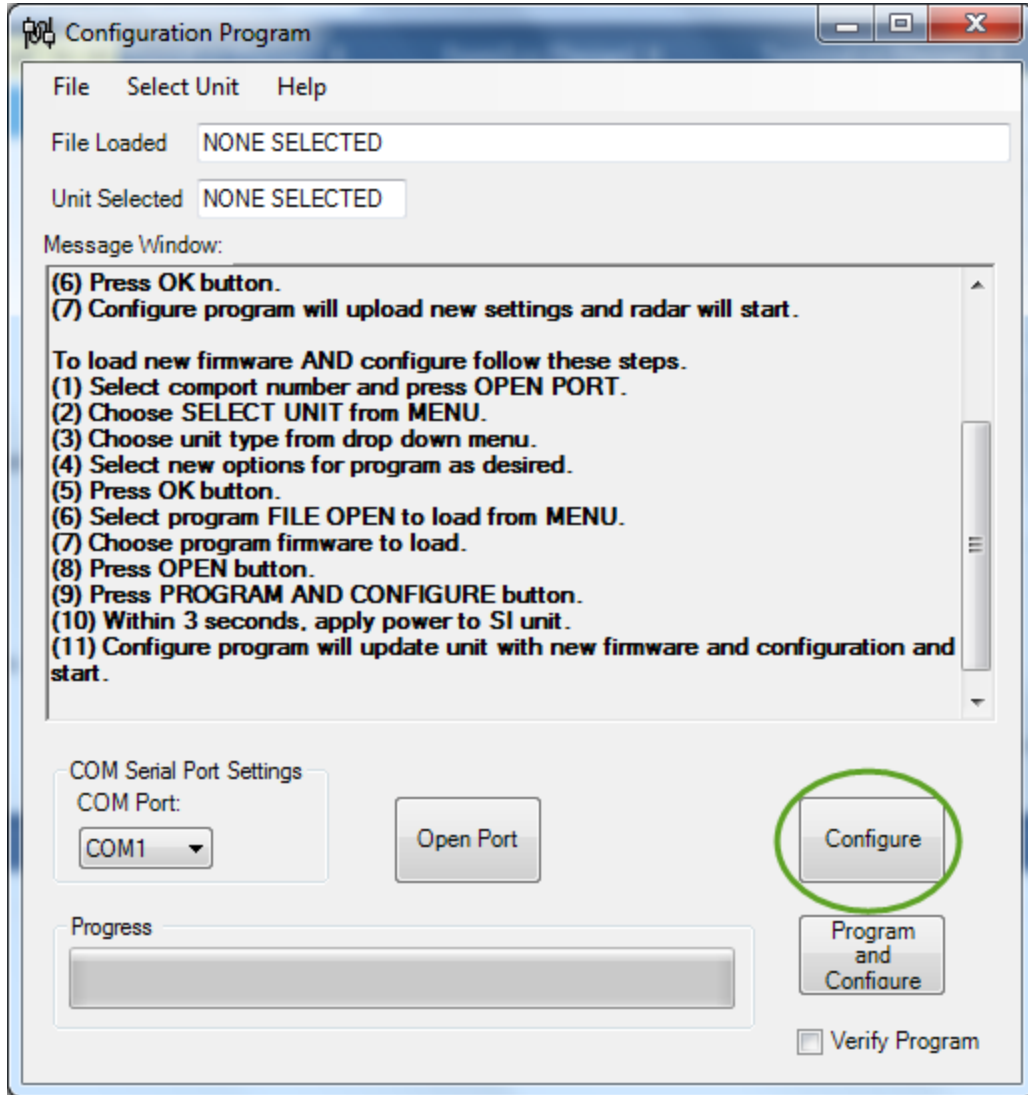


- (2) Make sure the COM PORT is set correctly to the proper open port available on your computer.

(3) Click on the “Open Port” button.



(4) Press the “Configure” button and then power up the G3 unit. (within 5 seconds)



(5) After a 1-5 second delay, the following configuration box will show. (NOTE: the settings in your G3 unit may be different than what is shown here)

G3 Configuration Items

FILE Serial Number Version Unit ID
G3 - 00000 0.8 7

Units MPH KPH Australia Version

MAX Patrol Speed 100 Max speed for this unit is: 100
MIN Patrol Speed 5 Min speed for this unit is: 5
MAX Target Speed Sta/Mov 210 Max speed for this unit is: 210
MIN Target Speed Sta/Mov 12 Min speed for this unit is: 12
Same Direction Separation 5 Min speed separation: 5

Minimum Volume level Volume range 1 - 8 1 Keypad Beep ON OFF

Sensitivity 5 1 to 5 max

Directional Mode ON

Operational Mode Stationary Moving Opposite Moving Same
 Stopwatch

Fast Mode Fast Simultaneous
 Disabled

Lock Options Patrol Lock Enable

Baud Rate 1200 2400 4800 9600
 19200 38400 57600 115200

Serial Protocol TTTTTPP<cr> OK

- (6) Make selections as desired then click on the OK button in the lower right hand corner to complete the loading of the new selections. You can also load in a predefined configure file using the "FILE" + "OPEN" commands.

